



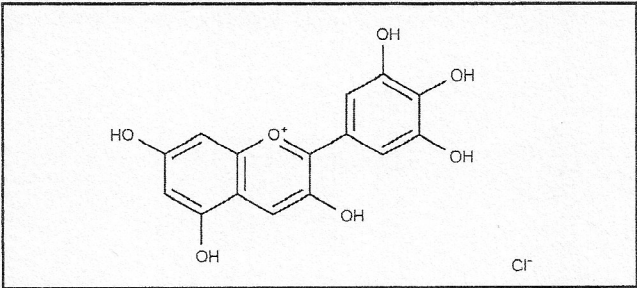
INDOFINE Chemical Company, Inc.

121 Stryker Lane, Bldg. 30
Hillsborough, NJ 08844 USA
Phone: (908) 359-6778; Fax: (908) 359-1179

Certificate Of Analysis

020904S DELPHINIDIN CHLORIDE Lot No.: 23112164

CAS RN	528-53-0
MOL FORMULA	C ₁₅ H ₁₁ O ₇ Cl
MOL WEIGHT	338,70



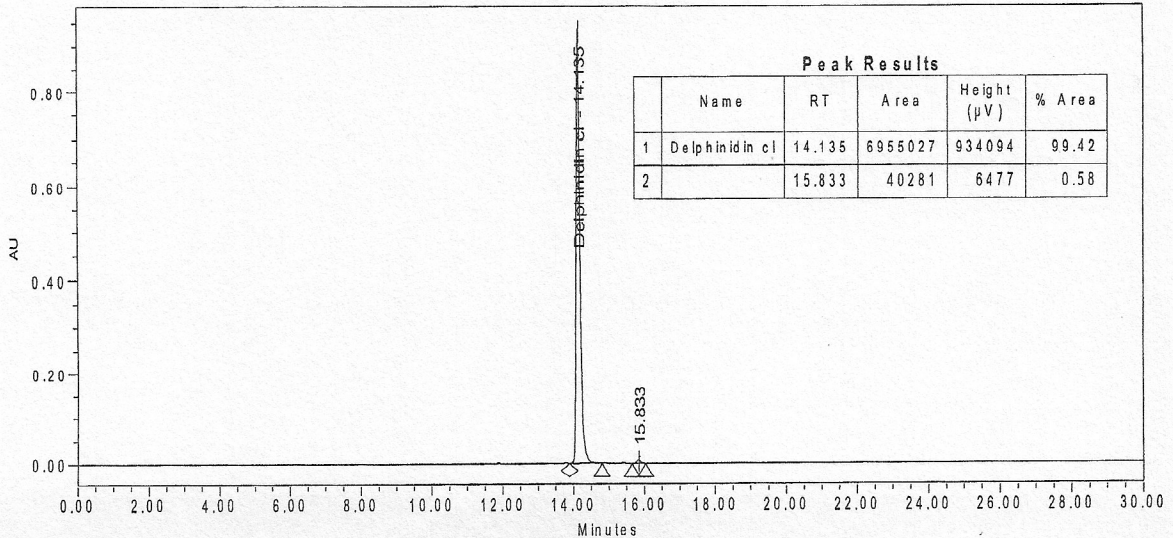
TEST	METHOD	UNIT	SPECIFICATION	RESULT
Appearance	Visual		Dark powder	Conform
Potency	UV		ϵ (548 nm, MeOH+0,1% HCl) = 41000 +/- 4000	41600
Water content	KF	% w/w		8,7
Residual solvents	GC-HS	% w/w		0,1
Inorganics	ICP-MS	% w/w		0,1
Purity	HPLC	% area	$\geq 97,0$	99,4
Assay	Calculated (*)	% w/w		90,6

(*) Assay = Purity by HPLC x (100 - %water - %solvents - %inorganics)

CHROMATOGRAPHIC PURITY / HPLC

Column : Atlantis dC18 - 4,6x150 mm - 3 μ m
 Mobile phase : Gradient: B from 5% to 60% in 20 min then 60% to 100% in 5 min then 5 min isocratic 100%
 A = Water + 10% HCOOH / B = MeOH
 Detection : UV 530 nm

Temperature : 30°C
 Flow rate : 1 ml/min
 Injection volume : 5 μ l
 Injection solvent : MeOH + 0,1% HCl



LONG TERM STORAGE : Below -15°C in a dry and dark place

TRANSPORT CONDITIONS : Ambient temperature